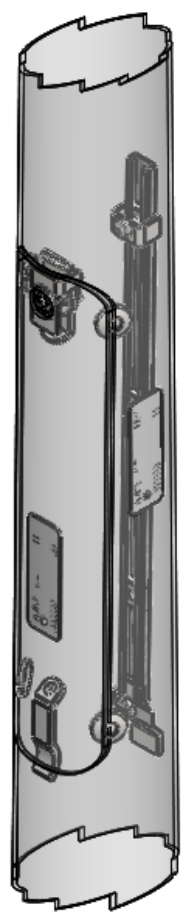
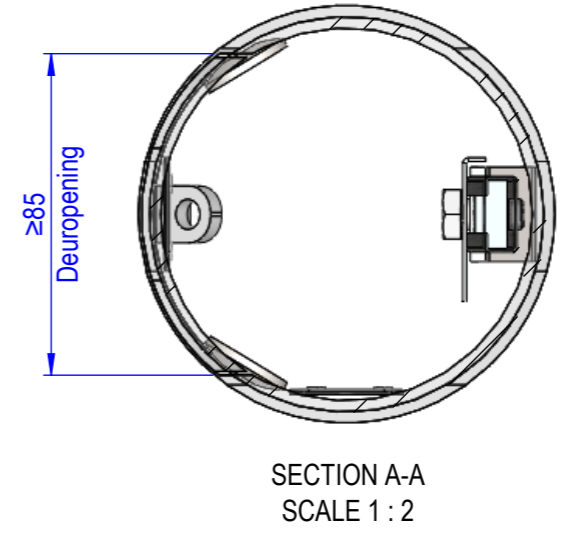
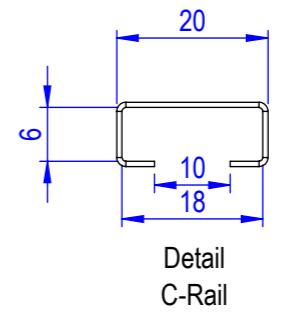
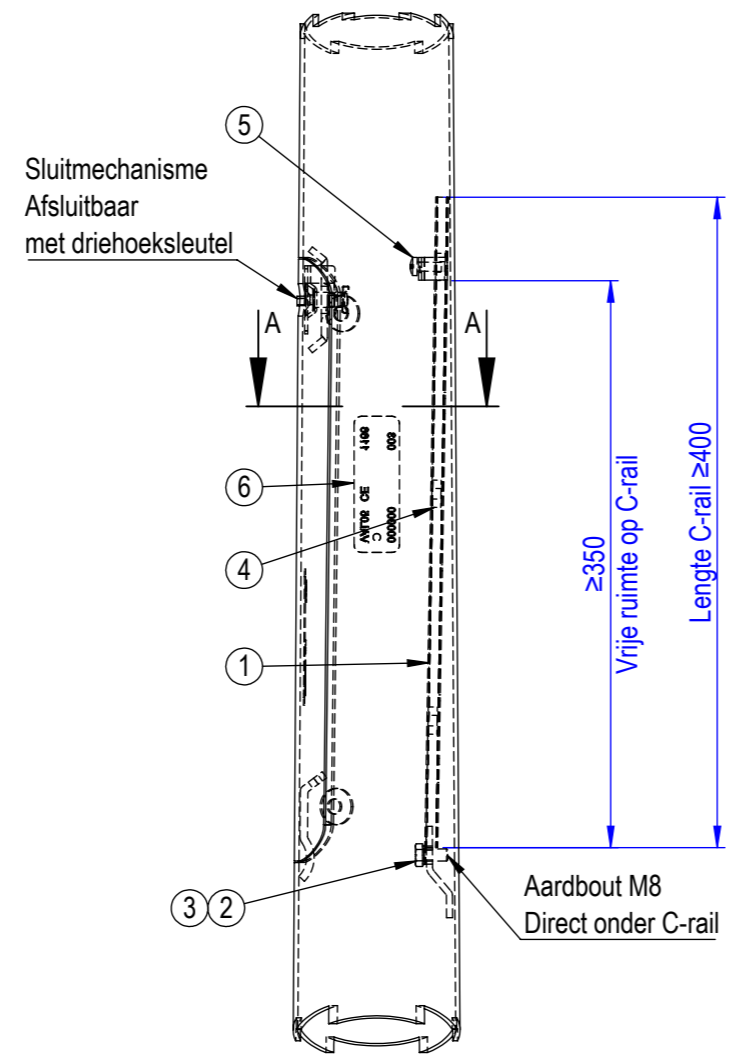
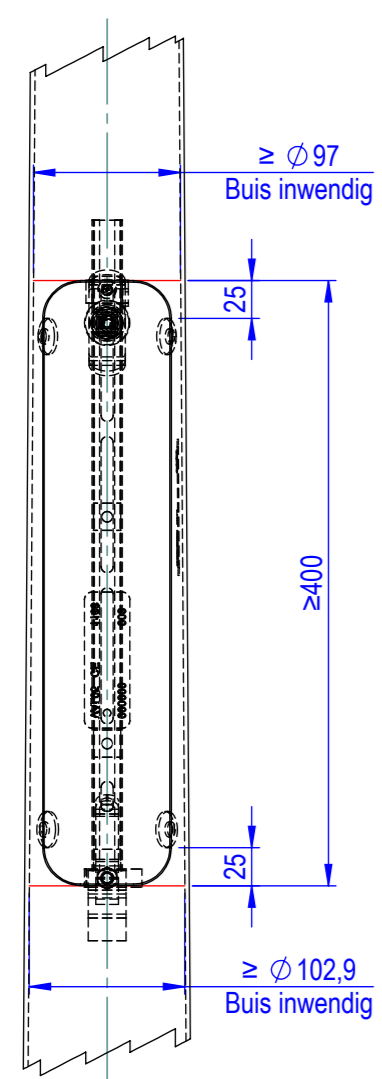


T: (+31) 495 599 959  
 Den Engelsman 3  
 6026 RB Maarheeze  
 The Netherlands  
 www.valmont.nl  
 info.nl@valmont.com

Monteer CAM-module zo hoog mogelijk in de deuropening om maximale ruimte voor het los- en aankoppelen van de stekker te verkrijgen.

Created By <b>BR</b>	Tolerances acc. <b>EN 40-2</b> <small>Operational Standard</small>	Overall Tolerances <b>ISO 2768-V</b>	Material -	Mass (kg) -	Area (m <sup>2</sup> ) -
Created On <b>30-5-2023</b>	Title <b>CONISCHE PRODUCTFAMILIE T.B.V. CAM-MODULE</b>			Coating -	
Checked By <i>RA</i>	Description			Part No. -	Sheet No. <b>1/2</b>
Checked On	Remark : <b>Strength Calc. acc. : -</b>			Welding class -	Revision -
Document Number <b>CAM-Module conische mast</b>			Revision Note -		
<b>valmont</b> <small>STRUCTURES</small>	Projection Type: 	Format <b>A3</b>	Scale <b>1:5</b>	Note: <b>Dimensions in millimeter</b>	Revision Note -
THIS DRAWING IS THE PROPERTY OF VALMONT NETHERLANDS B.V. USE OF THIS DRAWING WITHOUT PERMISSION, COPIED OR GIVEN TO THIRD PARTIES FOR INSPECTION IS PROHIBITED. COPYRIGHTS ARE RESERVED ACCORDING TO THE LAW.					



Pos	Qty.	Description	Length	Document Number	Article number
6	2	Typeplaatje, 1.0037 (S235JR)		Typeplaatje	214580
5	1	Schroef M6x16, 1.4303 (RVS A2)		Schroef M6x16 DIN7985	265584
4	3	Glijmoer M6 , 3.3535 (EN-AW 5754)		glijmoer M6	003957
3	1	Aardcodering gezet (tek200Z474), 1060 Alloy		257878	257878
2	1	Aardschroef M8x16, 1.4303 (RVS A2)		014971	014971
1	1	Montagerail, Galvanized Steel	430	montagerail L=430	340612

Created By	BR	Tolerances acc.	EN 40-2	Overall Tolerances	ISO 2768-V	Material	-	Mass (kg)	-	Area (m <sup>2</sup> )	-
Created On	30-5-2023	Checked By	RA	Title				Coating			
				CONISCHE PRODUCTFAMILIE T.B.V. CAM-MODULE							
Description							Part No.		Sheet No.		
							-		2/2		
Remark : Strength Calc. acc. :-							Document Number		Revision		
							CAM-Module conische mast		-		

valmont	Projection Type:	Format	Scale	Note:	Revision Note
		A3	1:5	Dimensions in millimeter	-