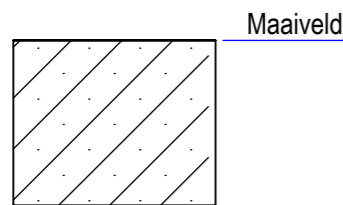
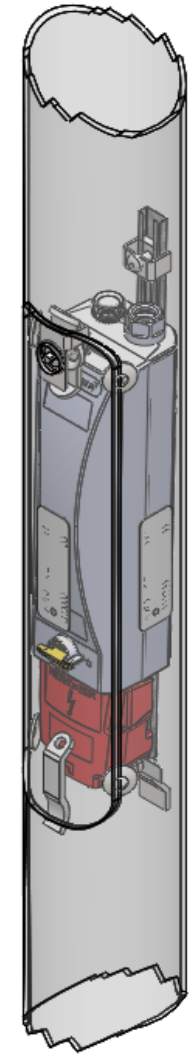
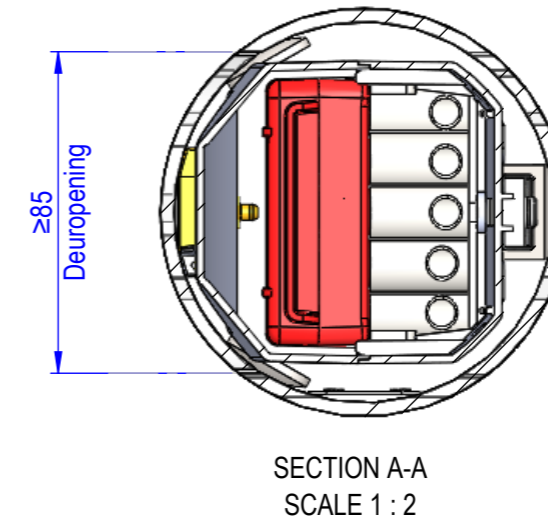
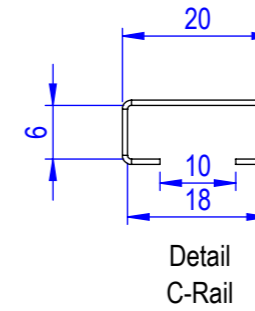
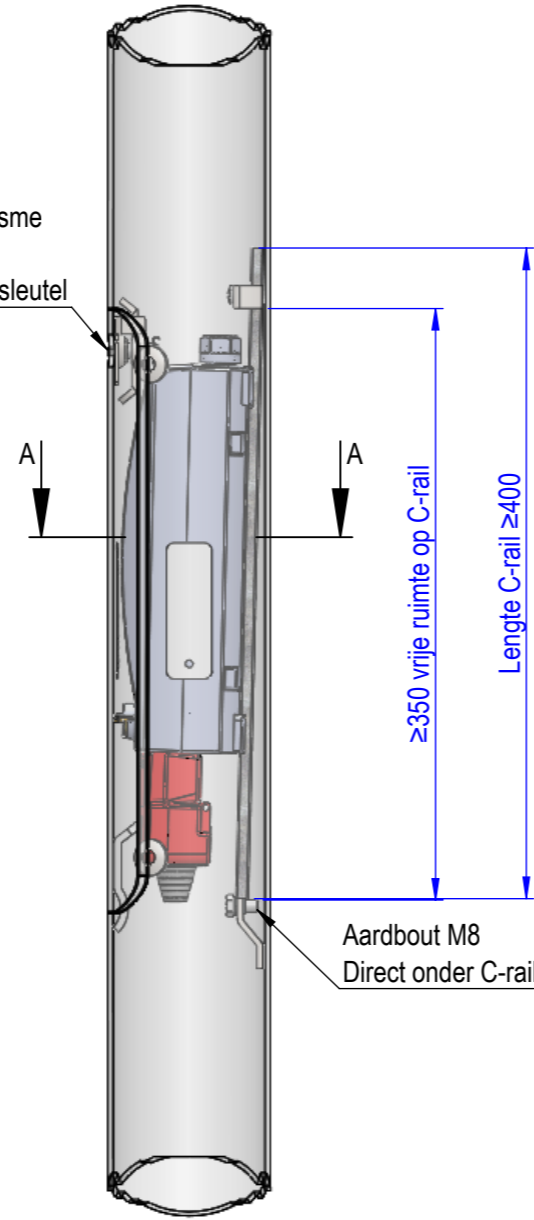


Sluitmechanisme  
Afsluitbaar  
met driehoeksleutel

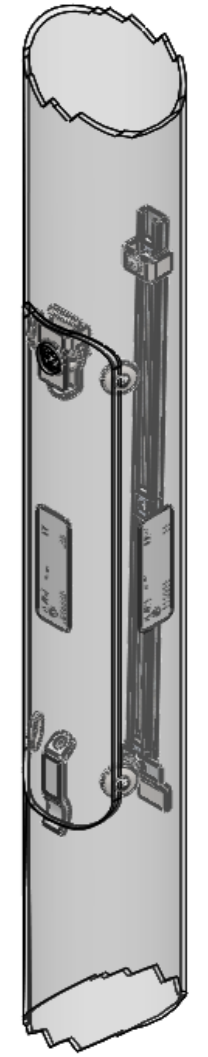
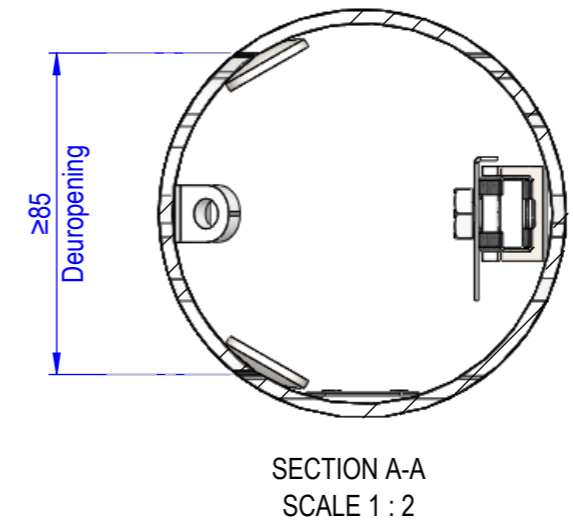
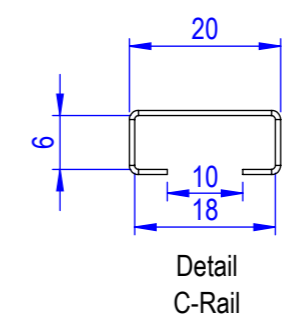
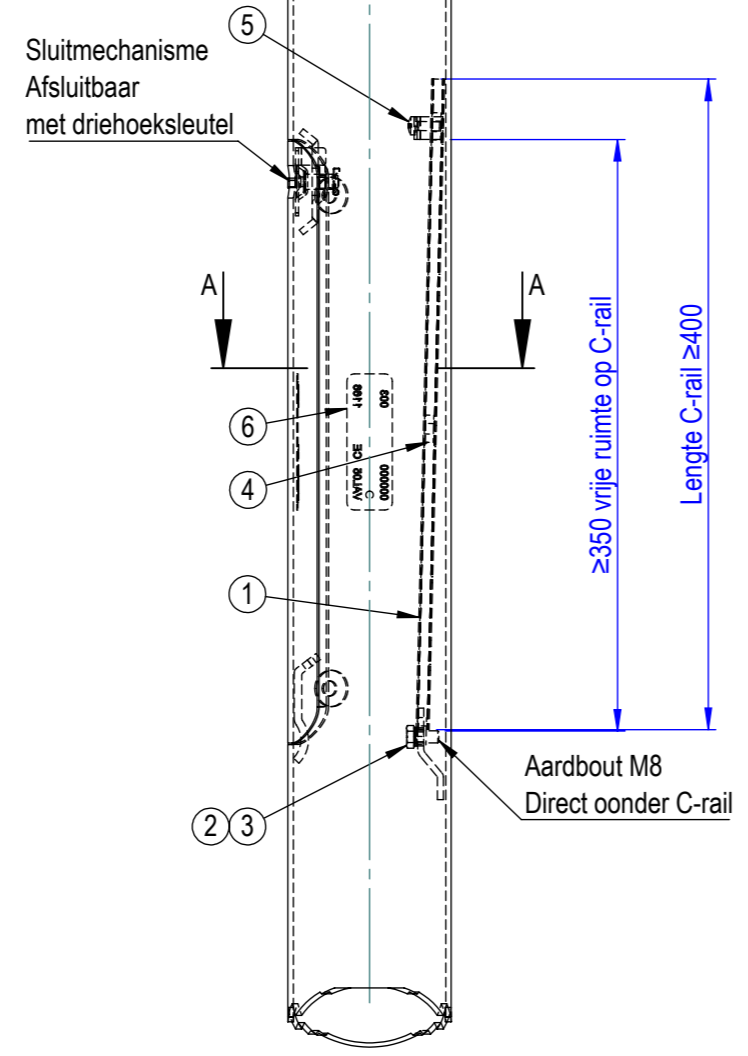
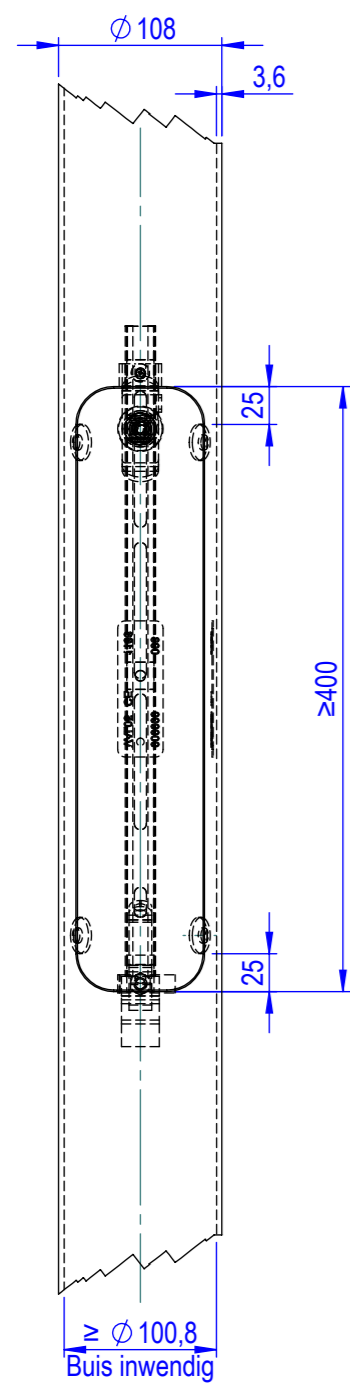


Tot onderzijde aansluitstekker  
 $\geq 300$

Valmont Nederland BV  
Den Engelsman 3  
6026 RB Maarheeze  
The Netherlands  
T: (+31) 485 599 959  
F: (+31) 485 591 781  
www.valmont.nl  
info.nl@valmont.com

Monteer CAM-module zo hoog mogelijk in de deuropening om maximale ruimte voor het los- en aankoppelen van de stekker te verkrijgen.

Created By <b>BR</b>	Tolerances acc. <b>EN 40-2</b> <small>Operational Standard</small>	Overall Tolerances <b>ISO 2768-V</b>	Material -	Mass (kg) -	Area (m <sup>2</sup> ) -
Created On <b>30-5-2023</b>	Title <b>CILINDRISCHE PRODUCTFAMILIE T.B.V. CAM-MODULE</b>			Coating -	
Checked By <i>BR</i>	Description			Part No. -	Sheet No. <b>1/2</b>
Checked On	Remark : <b>Strength Calc. acc.: -</b>			Welding class -	Revision -
Document Number <b>CAM-Module cilindrische mast</b>			Revision Note -		
<b>valmont</b> <small>STRUCTURES</small>	Projection Type: 	Format <b>A3</b>	Scale <b>1:5</b>	Note: <b>Dimensions in millimeter</b>	
THIS DRAWING IS THE PROPERTY OF VALMONT NETHERLANDS B.V. USE OF THIS DRAWING WITHOUT PERMISSION, COPIED OR GIVEN TO THIRD PARTIES FOR INSPECTION IS PROHIBITED. COPYRIGHTS ARE RESERVED ACCORDING TO THE LAW.					



Pos	Qty.	Description	Length	Document Number	Article number
6	2	Typeplaatje, 1.0037 (S235JR)		Typeplaatje	214580
5	1	Schroef M6x16, 1.4303 (RVS A2)		Schroef M6x16 DIN7985	265584
4	3	Glijmoer M6 , 3.3535 (EN-AW 5754)		glijmoer M6	003957
3	1	Aardschroef M8x16, 1.4303 (RVS A2)		014971	014971
2	1	Aardcodering gezet (tek200Z474), 1060 Alloy		257878	257878
1	1	Montagerail, Galvanized Steel	430	montagerail L=430	340612

Created By	BR	Tolerances acc.	EN 40-2	Overall Tolerances	ISO 2768-V	Material	-	Mass (kg)	-	Area (m <sup>2</sup> )	-
Created On	30-5-2023	Operational Standard									
Checked By	[Signature]	Title	CILINDRISCHE PRODUCTFAMILIE T.B.V. CAM-MODULE				Coating	-			
Checked On							Part No.	-			
Description							Welding class	-			
Remark	Strength Calc. acc.: -						Document Number	CAM-Module cilindrische mast		Sheet No.	2/2
							Revision	-			

valmont	Projection Type:	Format	Scale	Note:	Revision Note
		A3	1:5	Dimensions in millimeter	-

THIS DRAWING IS THE PROPERTY OF VALMONT NETHERLANDS B.V. USE OF THIS DRAWING WITHOUT PERMISSION, COPIED OR GIVEN TO THIRD PARTIES FOR INSPECTION IS PROHIBITED. COPYRIGHTS ARE RESERVED ACCORDING TO THE LAW.

Valmont Nederland BV  
Den Engelsman 3  
6026 RB Maarheeze  
The Netherlands  
T: (+31) 485 599 959  
F: (+31) 485 591 781  
www.valmont.nl  
info.nl@valmont.com