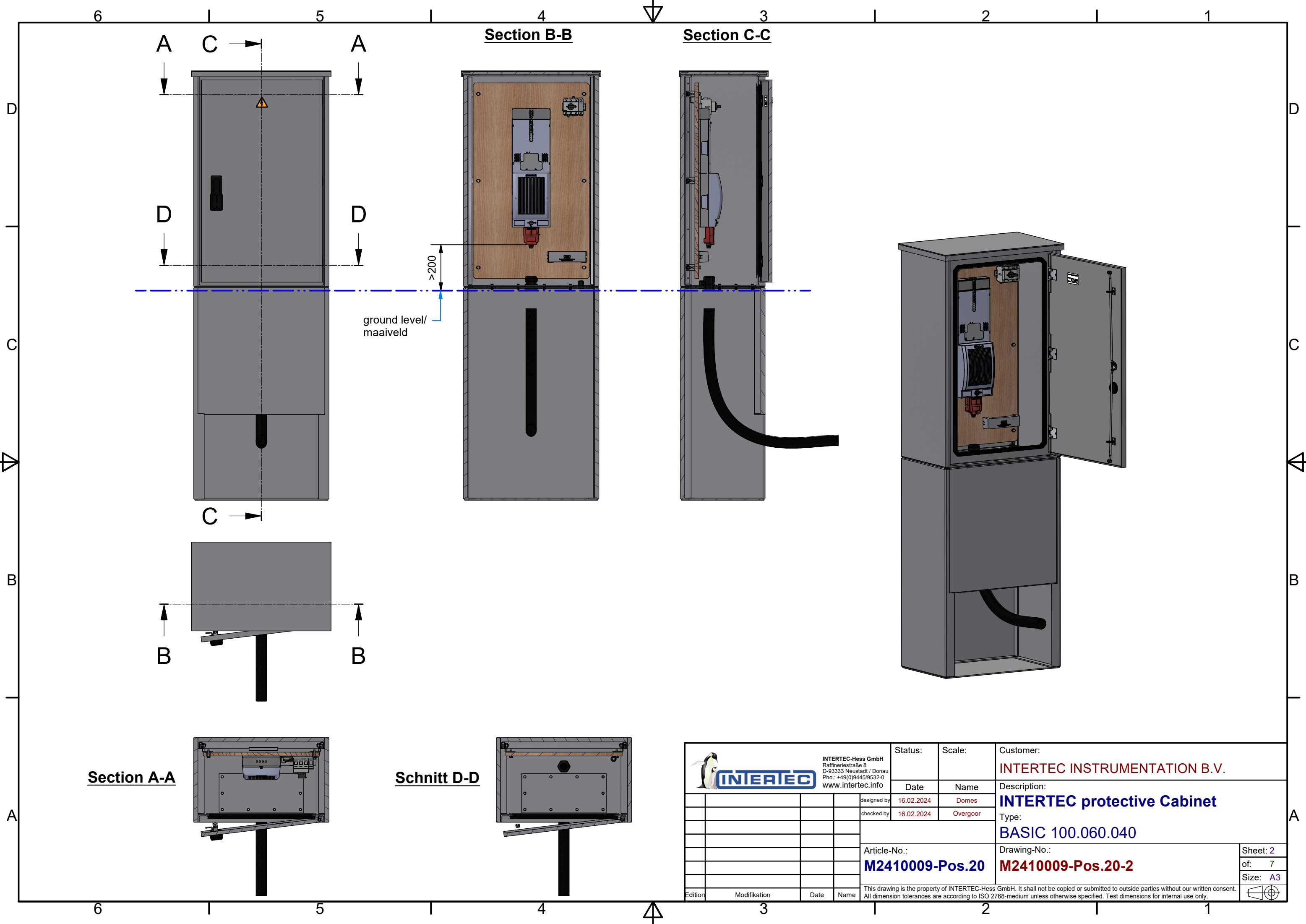


Delivery quantity: ___ pcs.		Status:	Scale:	Customer:
Surface: Standard		Date	Name	INTERTEC INSTRUMENTATION B.V.
Color: RAL 7032 Pebble grey	designed by	16.02.2024	Domes	Description:
C-Rails: Aluminium	checked by	16.02.2024	Overgoor	INTERTEC protective Cabinet
Floor design: Form CB + Socket	Article-No.:			Type:
Protection degree:	M241009-Pos.20			BASIC 100.060.040
	Drawing-No.:			M241009-Pos.20-2
	This drawing is the property of INTERTEC-Hess GmbH. It shall not be copied or submitted to outside parties without our written consent. All dimension tolerances are according to ISO 2768-medium unless otherwise specified. Test dimensions for internal use only.			Sheet: 1
				of: 7
				Size: A3



Section A-A

Schnitt D-D

		INTERTEC-Hess GmbH Raffineriestraße 8 D-93333 Neustadt / Donau Phn.: +49(0)9445/9532-0 www.intertec.info		Status:	Scale:	Customer:
		designed by	16.02.2024	Domes	INTERTEC INSTRUMENTATION B.V.	
checked by	16.02.2024	Overgoor	Date	Name	Description:	
			Article-No.:		INTERTEC protective Cabinet	
			M241009-Pos.20		Type:	
					BASIC 100.060.040	
					Drawing-No.:	
					M241009-Pos.20-2	
This drawing is the property of INTERTEC-Hess GmbH. It shall not be copied or submitted to outside parties without our written consent. All dimension tolerances are according to ISO 2768-medium unless otherwise specified. Test dimensions for internal use only.						Sheet: 2
						of: 7
						Size: A3