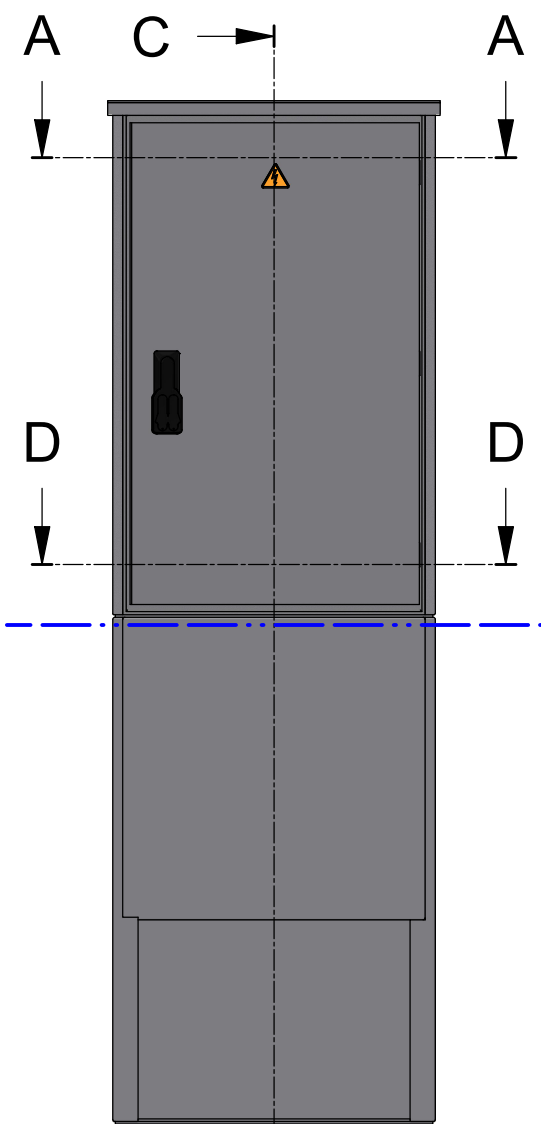
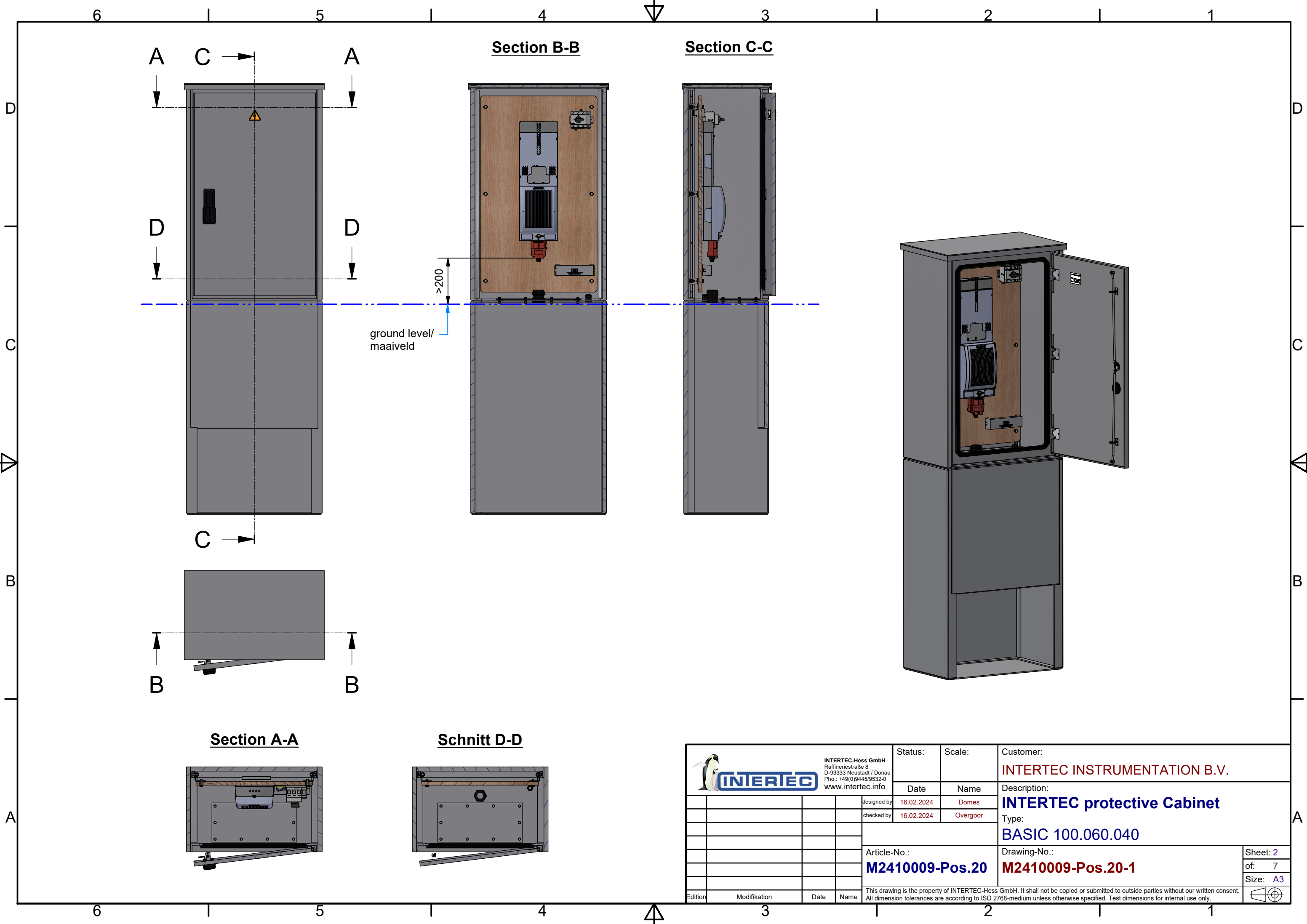
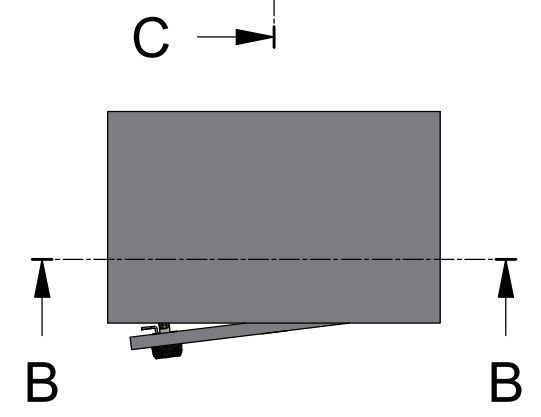
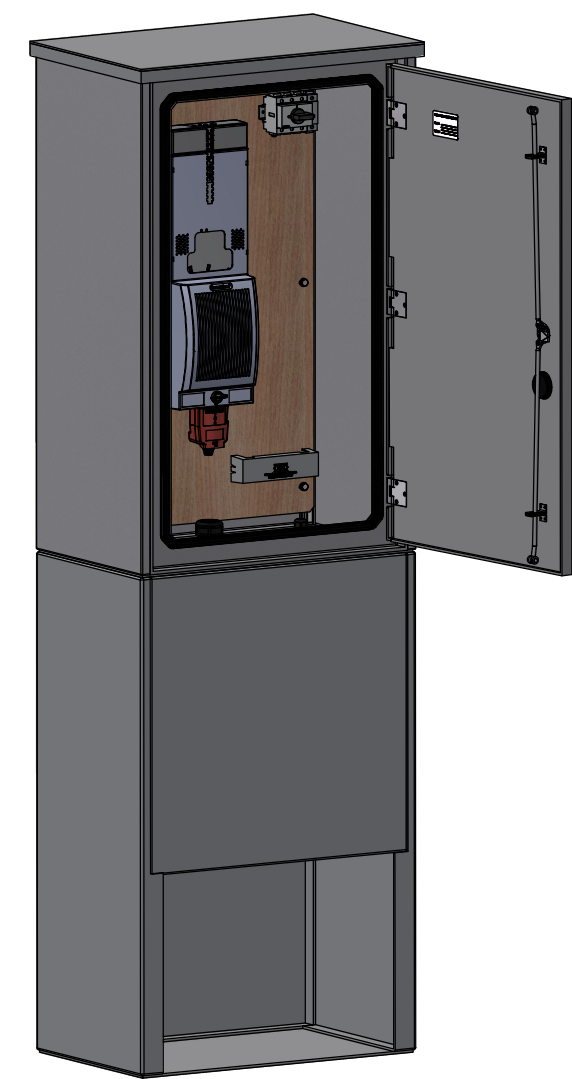
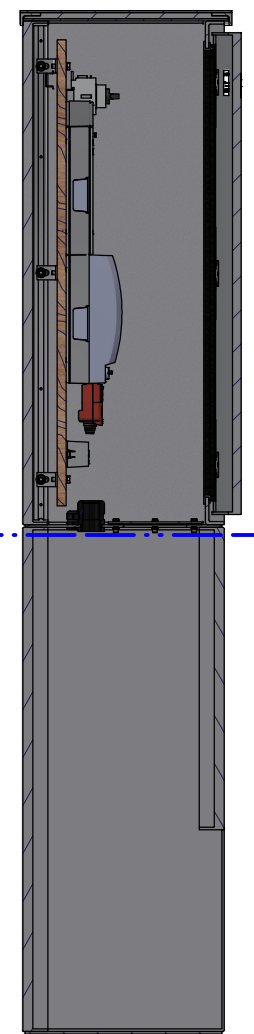
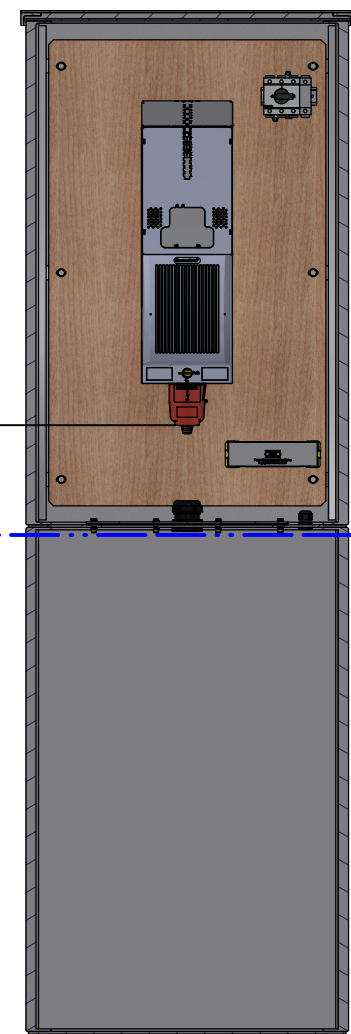


Delivery quantity: ___ pcs.	 INTERTEC-Hess GmbH Raffineriestraße 8 D-93333 Neustadt / Donau Phn.: +49(0)9445/9532-0 www.intertec.info	Status:	Scale:	Customer:
Surface: Standard		Date	Name	INTERTEC INSTRUMENTATION B.V.
Color: RAL 7032 Pebble grey	designed by	16.02.2024	Domes	Description:
C-Rails: Aluminium	checked by	16.02.2024	Overgoor	INTERTEC protective Cabinet
Floor design: Form CB + Socket	Article-No.:			Type:
Protection degree:	M241009-Pos.20			BASIC 100.060.040
	Drawing-No.:			Sheet: 1
	M241009-Pos.20-1			of: 7
	This drawing is the property of INTERTEC-Hess GmbH. It shall not be copied or submitted to outside parties without our written consent. All dimension tolerances are according to ISO 2768-medium unless otherwise specified. Test dimensions for internal use only.			Size: A3



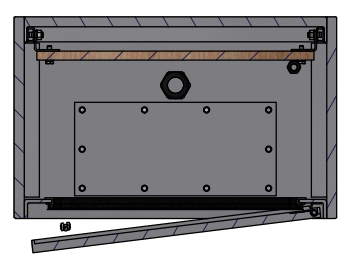
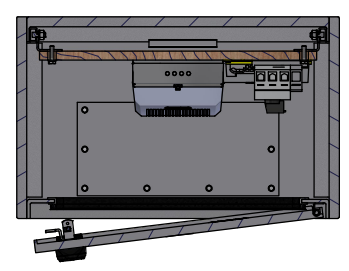
Section B-B


Section C-C



Section A-A

Schnitt D-D



 INTERTEC-Hess GmbH Raffineriestraße 8 D-93333 Neustadt / Donau Phn.: +49(0)9445/9532-0 www.intertec.info		Status:	Scale:	Customer:
		designed by	Date	Name
		16.02.2024	Domes	INTERTEC INSTRUMENTATION B.V.
		16.02.2024	Overgoor	Description:
Article-No.:				INTERTEC protective Cabinet
M241009-Pos.20				Type:
				BASIC 100.060.040
Drawing-No.:				Sheet: 2
M241009-Pos.20-1				of: 7
This drawing is the property of INTERTEC-Hess GmbH. It shall not be copied or submitted to outside parties without our written consent. All dimension tolerances are according to ISO 2768-medium unless otherwise specified. Test dimensions for internal use only.				Size: A3
Edition	Modifikation	Date	Name	