

D

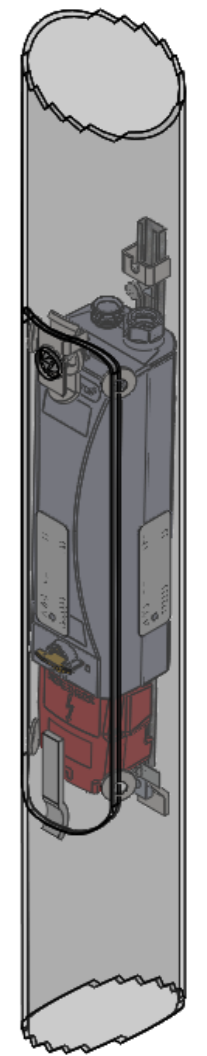
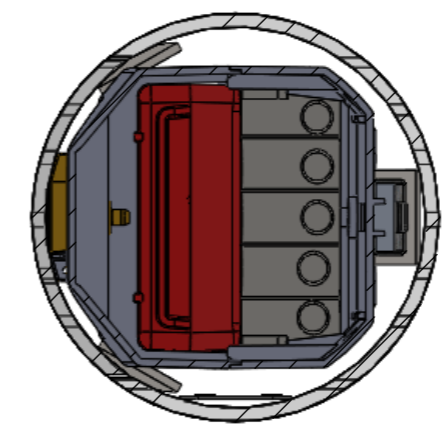
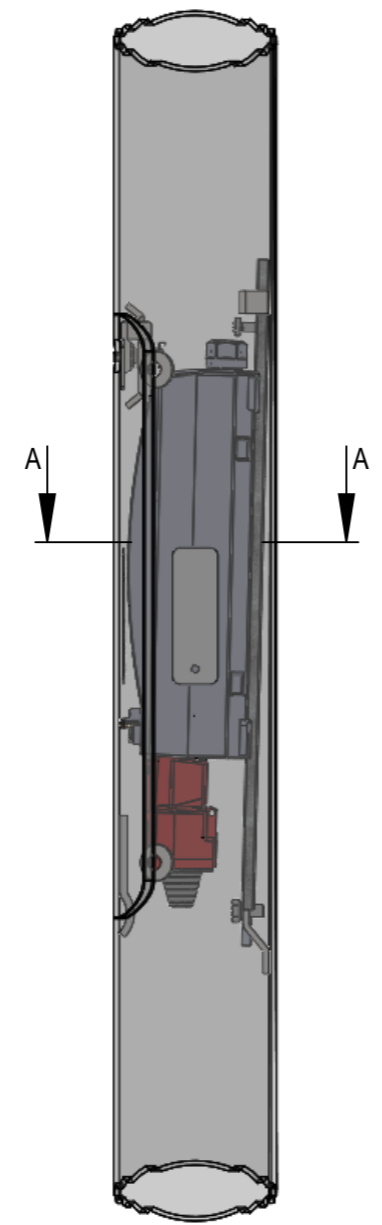
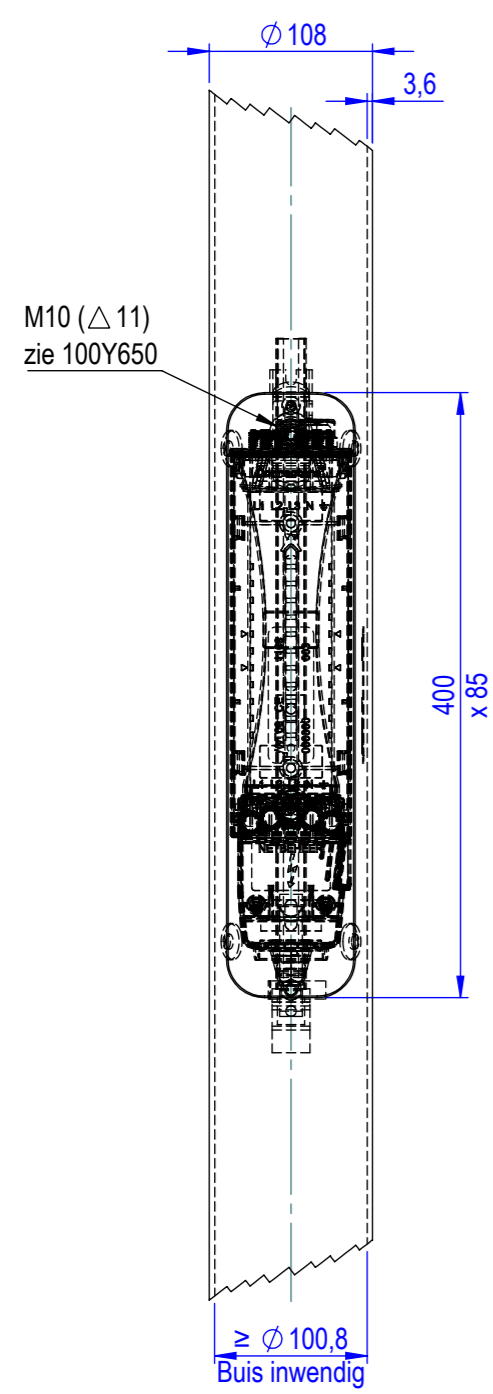
C

B

D

C

B



Bovenstaand is getest door de netbeheerder.  
CAM module past en derhalve wordt de  
pasvorm gegarandeerd in alle gelijkwaardige  
of grotere masten / deuren welke deze productfamilie vormen.

Created By <b>BR</b>	Tolerances acc. <b>EN 40-2</b> <small>Operational Standard</small>	Overall Tolerances <b>ISO 2768-V</b>	Material -	Mass (kg) -	Area (m <sup>2</sup> ) -
Created On <b>30-5-2023</b>	Title <b>CILINDRISCHE PRODUCTFAMILIE T.B.V. CAM-MODULE</b>			Coating -	
Checked By <i>BR</i>	Description			Part No. -	Sheet No. <b>1/1</b>
Checked On	Remark : <b>Strength Calc. acc. : -</b>			Welding class -	Revision -
Document Number <b>CAM-Module cilindrische mast</b>			Revision Note -		
<b>valmont</b> <small>STRUCTURES</small>	Projection Type: 	Format <b>A3</b>	Scale <b>1:5</b>	Note: <b>Dimensions in millimeter</b>	
THIS DRAWING IS THE PROPERTY OF VALMONT NETHERLANDS B.V. USE OF THIS DRAWING WITHOUT PERMISSION, COPIED OR GIVEN TO THIRD PARTIES FOR INSPECTION IS PROHIBITED. COPYRIGHTS ARE RESERVED ACCORDING TO THE LAW.					

Valmont Nederland BV  
Den Engelsman 3  
6026 RB Maarheeze  
The Netherlands  
T: (+31) 485 599 959  
F: (+31) 485 591 781  
www.valmont.nl  
info.nl@valmont.com

A